

SATIN
with a chain of pearls



Satin elegance with a pearl chain

Welcome to the tutorial for making an elegant satin handbag for festive occasions!

I created this unique handbag to complement a new article on my blog about formal and wedding handbags. It's my first model with a buttoned lapel, a fixed pearl shoulder chain and a decorative heart filigree clasp. I used satin as the material, which represents a new look with a fluttering, yet elegant effect.

This handbag is the perfect accessory for weddings, the theater or other festive events. You can make it in colors that will match your dress. At the same time, this project will allow you to expand your skills in the looping technique and try working with this wonderful material. Thanks to its brittle appearance, it will forgive you a number of beginner's mistakes.

The good news is that the handbag can be made in one weekend. So why not give it a try? Make your own unique handbag exactly according to your ideas and needs. Get inspired by this tutorial and create the perfect accessory for your next festive occasion!

Dimensions: approx. 17 x 13 cm
Depth: 5 cm

USED TECHNIQUES

Preparing a Square or Rectangular Base
Linear Locker Hooking
Spiral Locker Hooking
Sewing in Tails
Assembling Projects
Sewn of Fabric Lining
Preparing of Reinforced Bottom
Framing the Base

MATERIAL INVENTORY

Kanava size 2 (#5)
Looping Areas and Edges: white satin approx. 70 meters of stripes 1.3 cm wide
Locking medium: white solid cotton yarn
Lining: white satin in size 39x22 cm
Handle: pearls, ribbon 3 mm in gray or white color
Reinforced bottom: plywood 1.5 mm
Looping tool
Tapestry needle
Sewing machine, needle, thread

- 1 Cut 5 pieces of canvas:
 - 1 piece 43 squares wide and 30 squares tall for the front part,
 - 1 piece 43 squares wide and 49 squares tall for the back part with flap,
 - 2 pieces 14 squares wide and 30 squares tall for the side pieces and
 - 1 piece 43 squares wide and 14 squares tall for the bottom of the handbag.

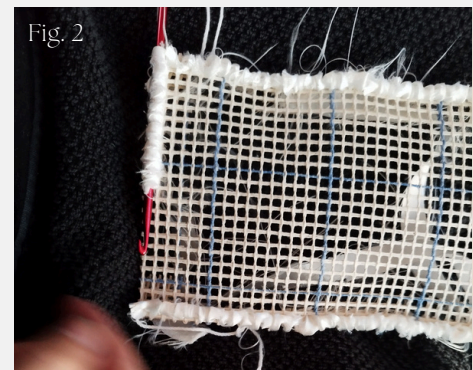
Fold over the edges of each piece of canvas by creasing the rows indicated by the gray areas in the pattern on pages 5 - 7.

- 2 Cut with scissors, or cut with a cutting wheel, strips of white satin (Fig. 1).



- 3 Loop one row around the front and back pieces (Fig. 2).

- 4 Then loop using the Linear Locker Hooking method from top to bottom on both the front and back pieces (Fig. 3).



- 5 Loop the sides of the bag and the bottom - you can again use the Linear Locker Hooking method from top to bottom, or like me, the Spiral Locker Hooking technique.

- 6 When finished, you will have five looped parts (Fig. 4).

- 7 Hide all loose ends of satin and locking medium in all five pieces.

- 8 Whipstitch all five parts together.



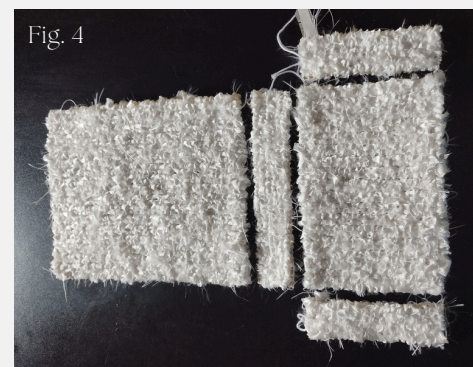
- 9 Whipstitch also all the remaining edges of the canvas to cover the frame completely.

- 10 Add a magnetic closure to the inside of the flap and to the front of the bag as well. Determine the fastening distance according to the folding of the flap - where the folding will fit, take two centimeters and attach the magnetic fastening.

- 11 Cut a 39 x 22 cm piece of satin. Sew all four edges on the sewing machine. Put it in your purse and pin where you will make the seam on the sides, how wide it will be and how high you will sew the lining.

- 12 Don't forget to take into account the edges of the bag when adjusting. Sew the side edges of the lining.

- 13 Take a package of white pearls and string them on a narrow, 3 mm ribbon, or strong string. Leave approx. 10 cm free end of the ribbon/string at the ends.



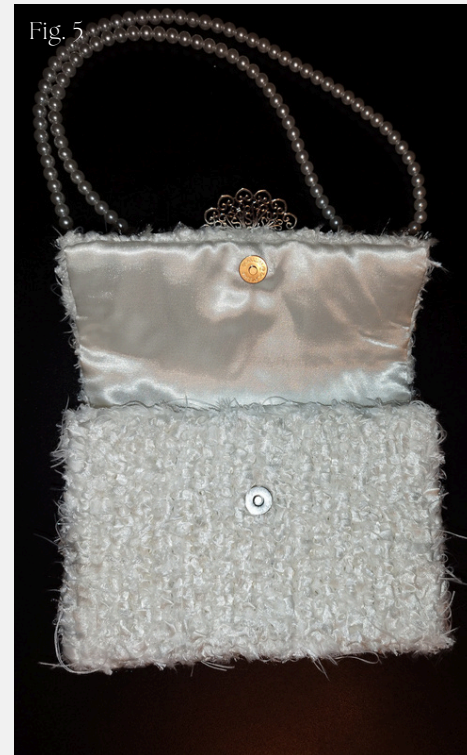
- 14 Close the purse with the fastener and measure about 4-6 cm, as you like, from the edges of the purse in the upper part of the folded flap. Thread the remaining ends of the ribbon/string into a tapestry needle and thread the first part of the pearl chain from the front side to the reverse side. Thread the other end of the rest of the ribbon/string into the tapestry needle and, in the same row and the same distance from the edge of the purse, as the first part, insert again from the front to the reverse side.
- 15 Tie the remaining end of the ribbon/string well in several knots on the inside of the ub.

My tip

If you are going to make a larger handbag with a flap, you must either on the upper part or add a haberdashery eye to the side parts of the handbag for fastening the straps/cuts, or tie each end of the remaining ribbon/string separately in the place where you inserted it. And so that it doesn't come off, you have to tie it over a haberdashery clutch or pad so that the weight of your handbag doesn't deform the flap of your handbag.

- 16 The upper cutters, fixed in this way from above and tied inside, are suitable for lighter contents of the handbag, say, up to 500 g.
- 17 Place the sewn lining inside the purse, carefully trim, fold the entangled edges in between the lining and the purse, and backstitch by hand with a needle and thread along the entire length of the purse, including the flap (Fig. 5).
- 18 Around the place where you have the magnetic closure on the lapel, sew some solid metal filigree, or a cabochon mineral. There are no limits when it comes to decorating.

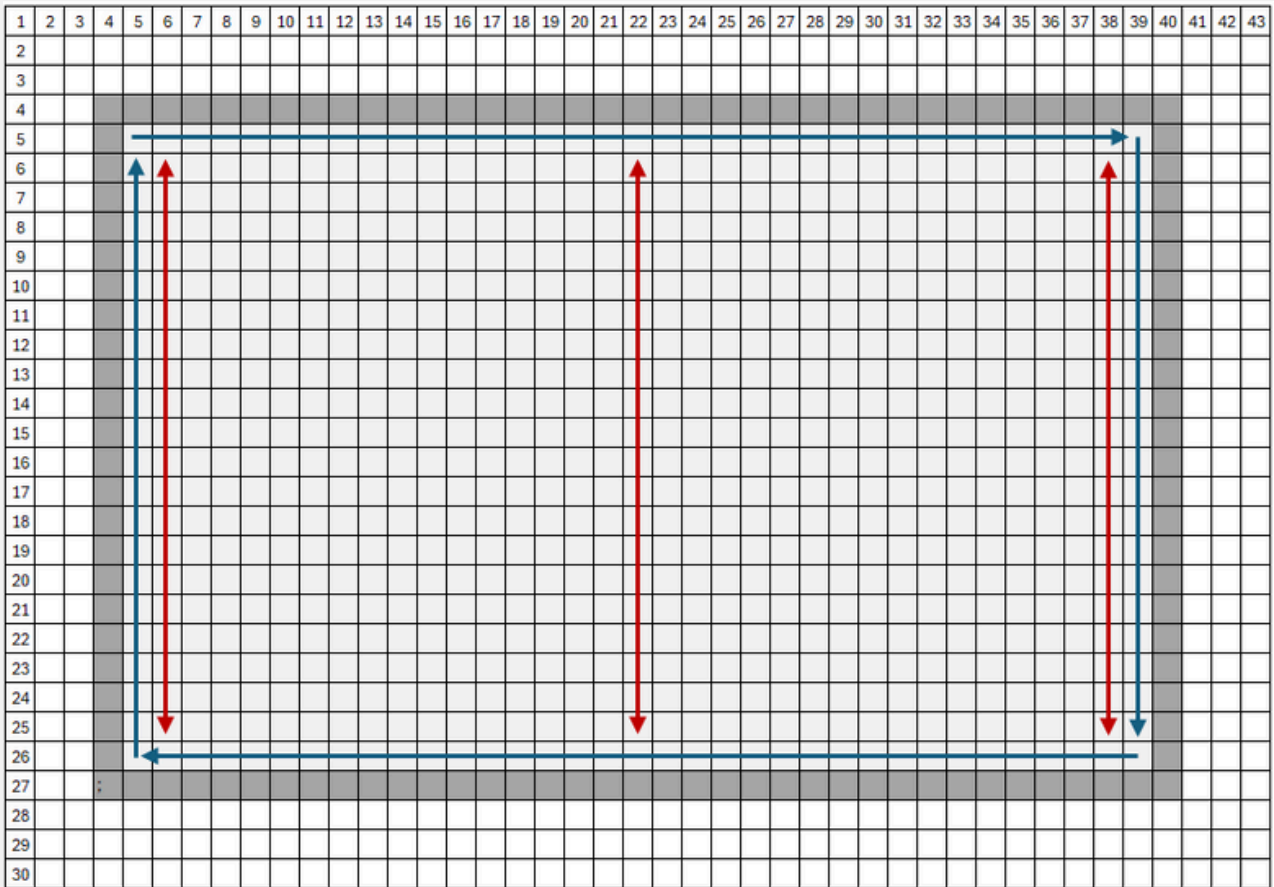
I wish you a nice creation :)



Satin elegance with a pearl chain

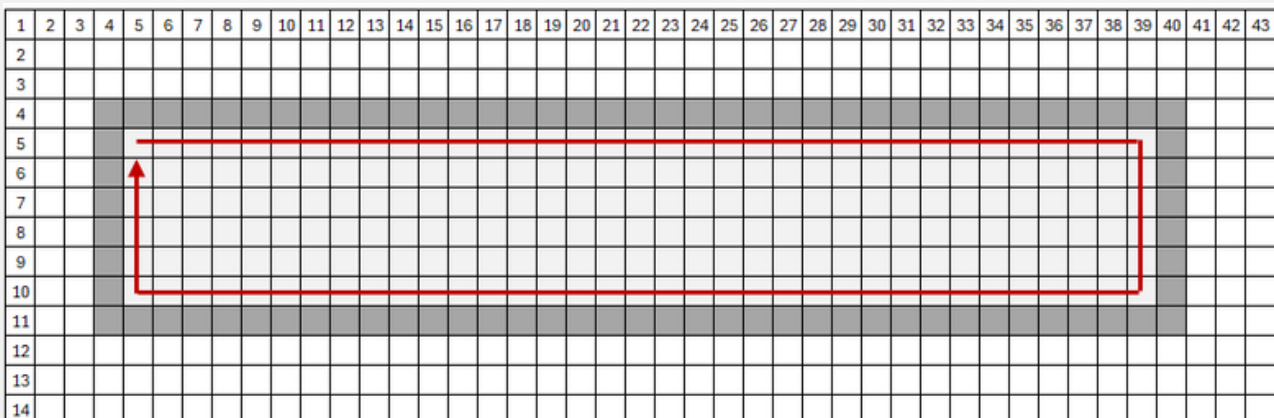
FRONT SIDE

(SEE PAGE 3 AND 4 FOR INSTRUCTIONS ON THE PROJECT)



BOTTOM

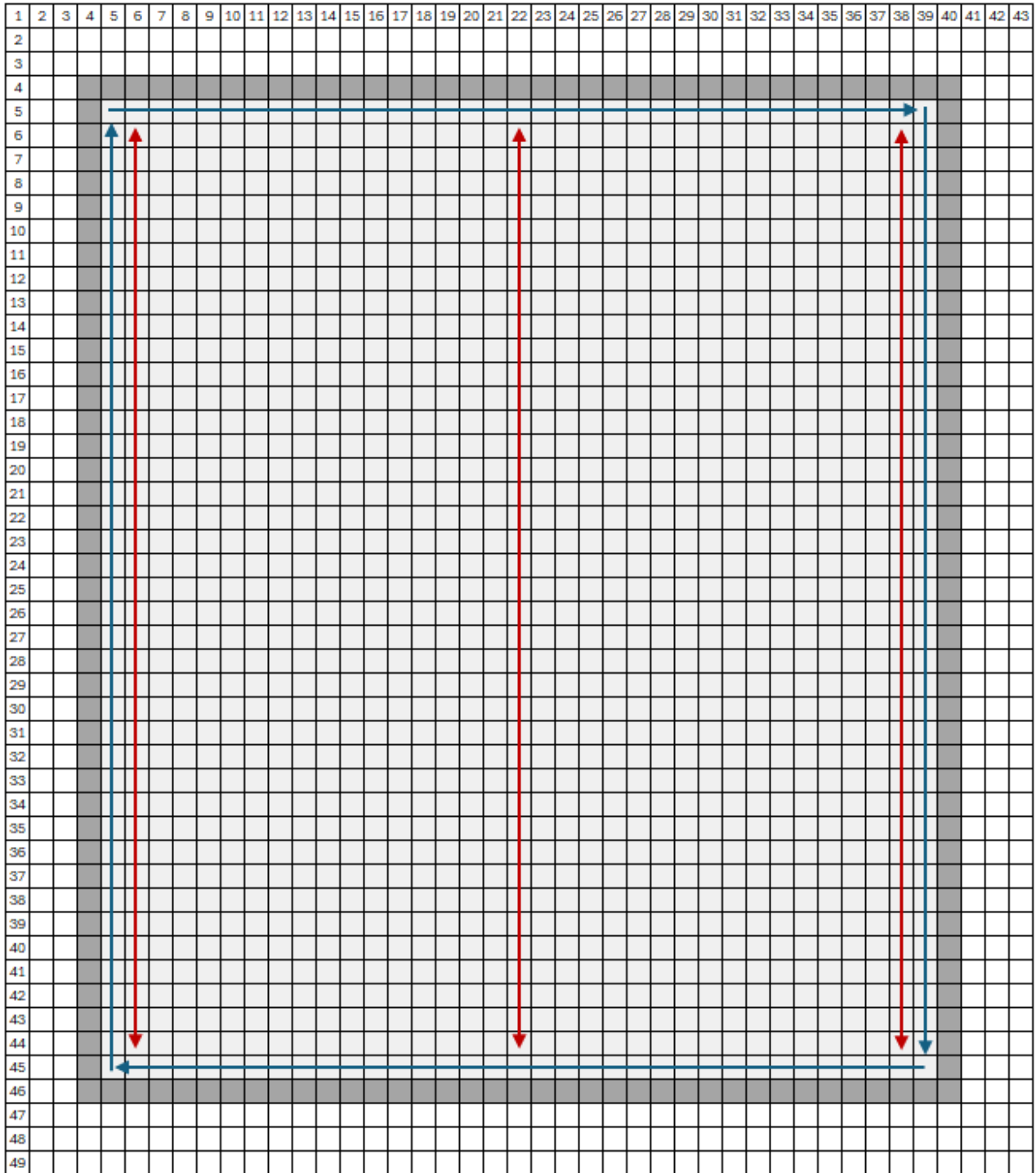
(SEE PAGE 3 AND 4 FOR INSTRUCTIONS ON THE PROJECT)



Satin elegance with a pearl chain

BACK SIDE WITH THE FLAP

(SEE PAGE 3 AND 4 FOR INSTRUCTIONS ON THE PROJECT)



Satin elegance with a pearl chain

SIDE PARTS

(SEE PAGE 3 AND 4 FOR INSTRUCTIONS ON THE PROJECT)

